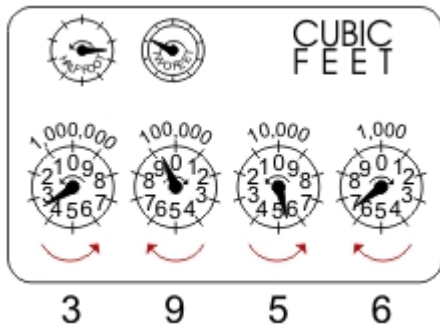


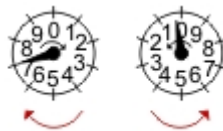
How to Read a Gas Meter

Here are a few simple rules:

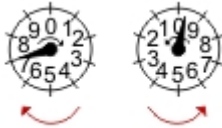
- Read each dial in the direction shown by the arrows.
- If the dial hand is between the numbers, use the lower one (if between 9 and 0, read 9).
- If the dial hand is exactly on a number, look at the dial to the immediate right. If its dial hand is not past zero, record the lower number for the dial in question.
- While the number of dials on your meter may vary, the procedure for reading them is the same.



Here are some examples:

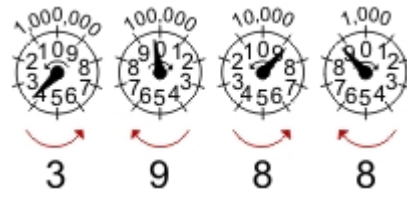


If the hand on the right has passed 0, write down the number the hand on the left is pointing to. In this case, it is a 7.



If the hand on the right has not passed 0, write down the next lowest number. In this case, it is a 6.

Now look at this tougher reading...



Once you have obtained your reading from your meter, you can subtract from it the reading from your last bill, and that number will be your usage measured in CcF or “Hundreds of Cubic Feet.”